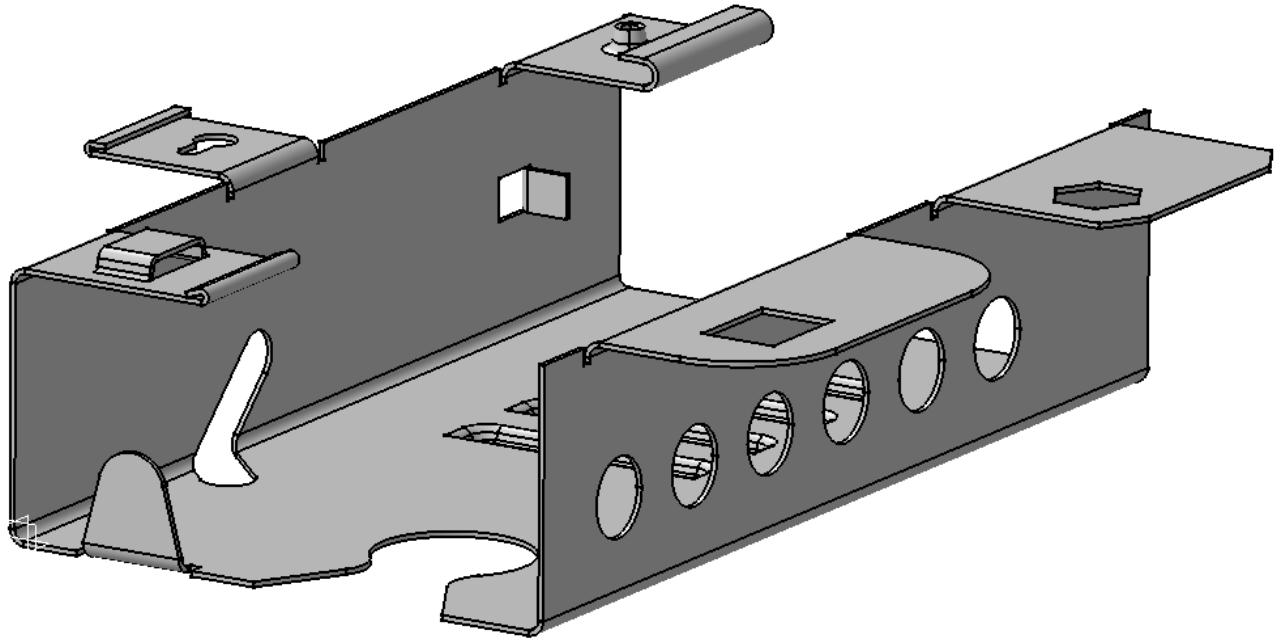




CATIA Version 5

Sheet Metal Design

Kučište



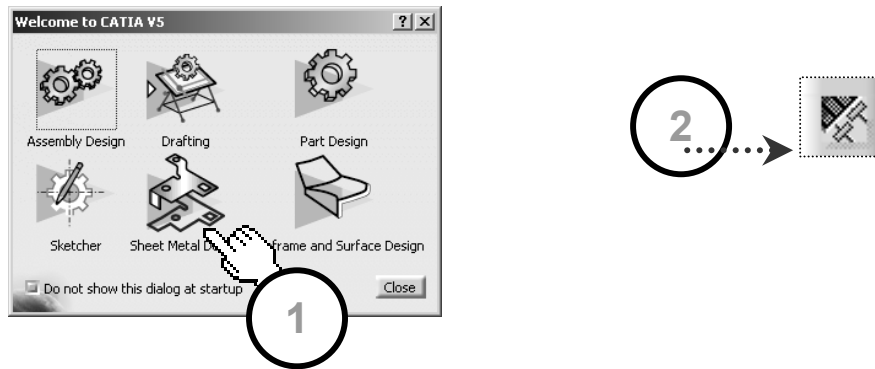
© CadCam Design Centar, 2001-08-10

Sva prava pridržana.

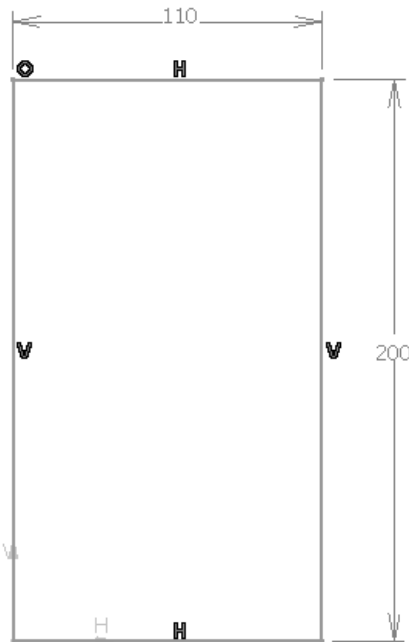
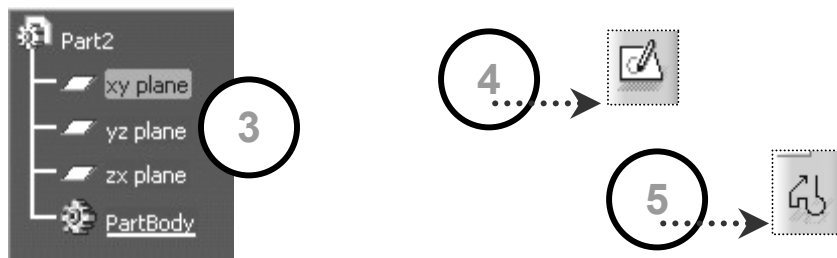
Ova publikacija, kao niti jedan njen dio, ne može biti reproducirana, kopirana niti prevođena, u bilo kom obliku, mehaničkom, elektronskom, fotokopiranom ili bilo kojem drugom, bez izričite, pisane suglasnosti CadCam Design Centra.

Ovi materijali su isključivo namjenjeni za interne potrebe školovanja CATIA V5 korisnika i ne smiju se koristiti u druge svrhe niti davati trećim osobama.

Vježbu započinjemo ulaskom u modul **Sheet Metal Design** na jedan od prethodno opisanih načina. Nakon toga odabiremo parametre s kojima ćemo raditi (debljina lima 1 mm, radijus savijanja 2 mm, Square relief, Rectangular Corner Relief.)



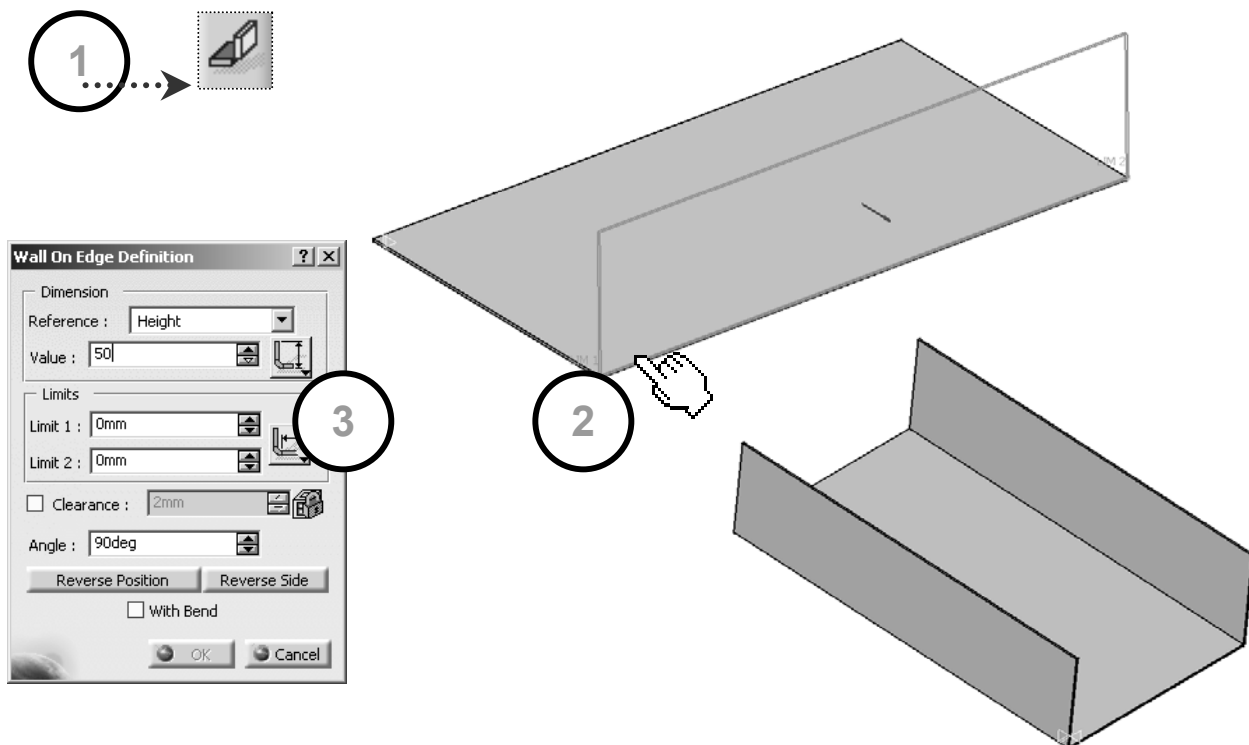
Selektiramo ravninu **XY** i ulazimo u **Sketcher**. U njemu napravimo konturu prema slici.



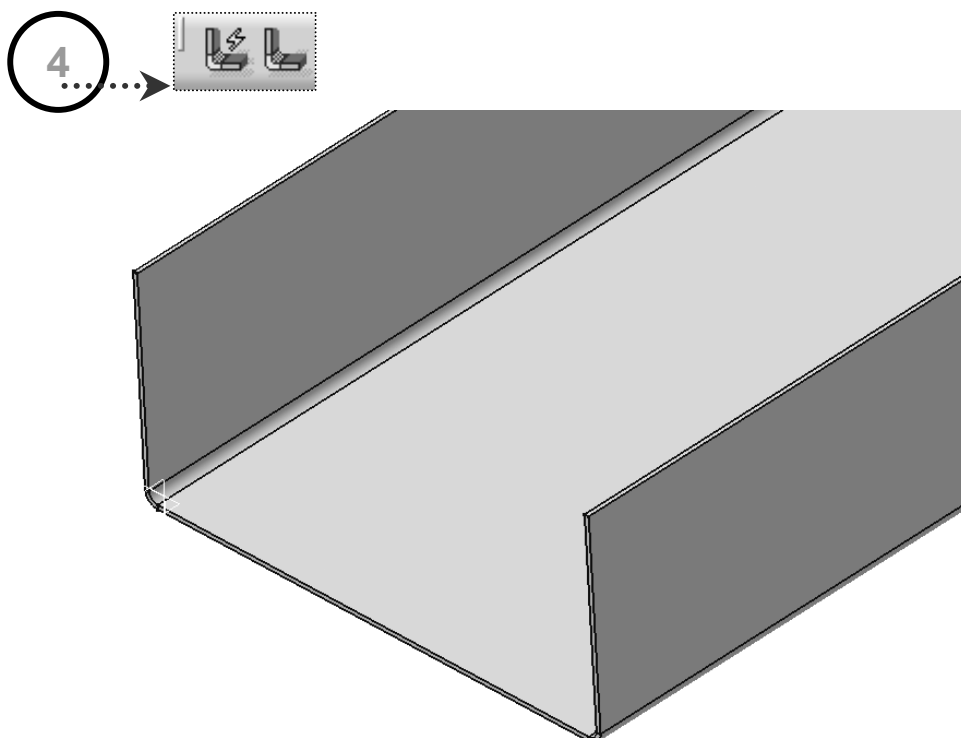
Izlazimo iz Sketcher-a i aktiviramo ikonu **Wall**.



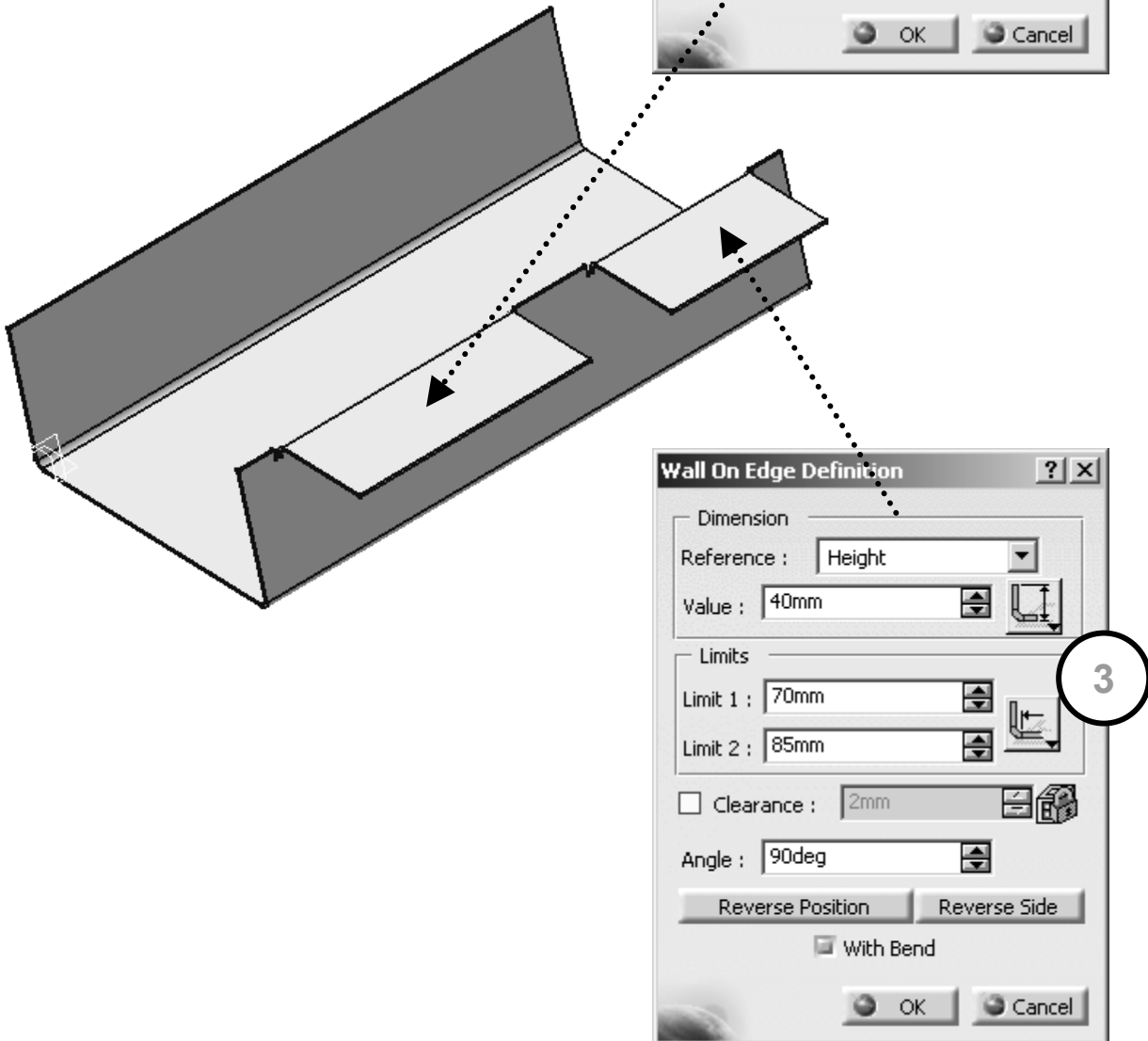
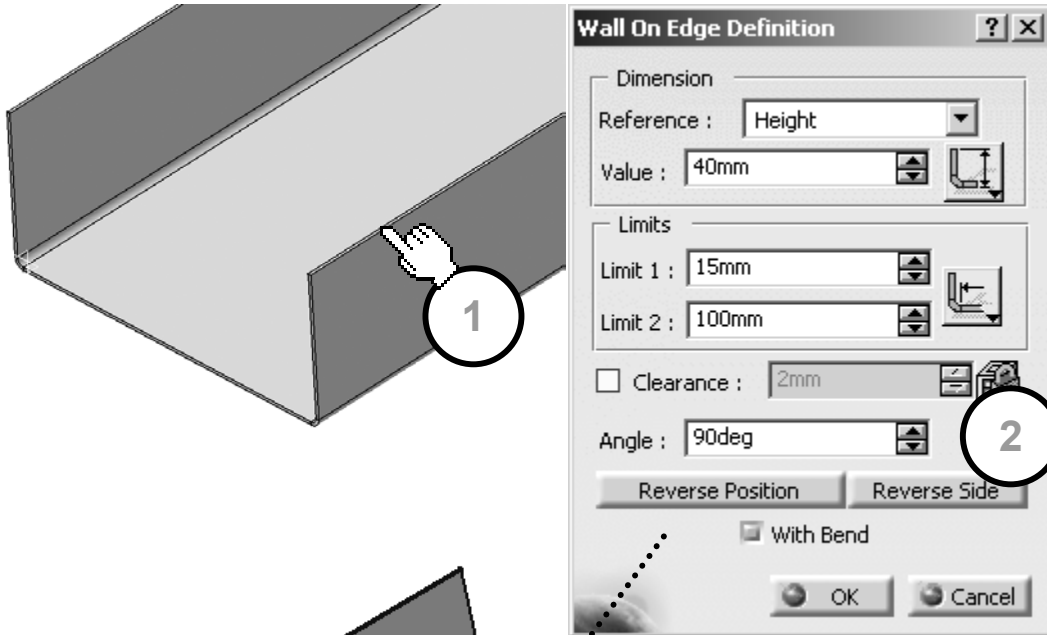
Na tako dobivenu osnovu dodajemo stranice. Koristimo funkciju **Wall on Edge**. Otvara se prozor u kojem definiramo visinu, kut, te eventualno mijenjamo dužinu stranice. Selektiramo bočni brid. Pojavljuje se skica buduće stranice. Strelica pokazuje smjer u kojem je definirana debljina lima. Na jednaki način radimo stranicu i na drugoj strani.



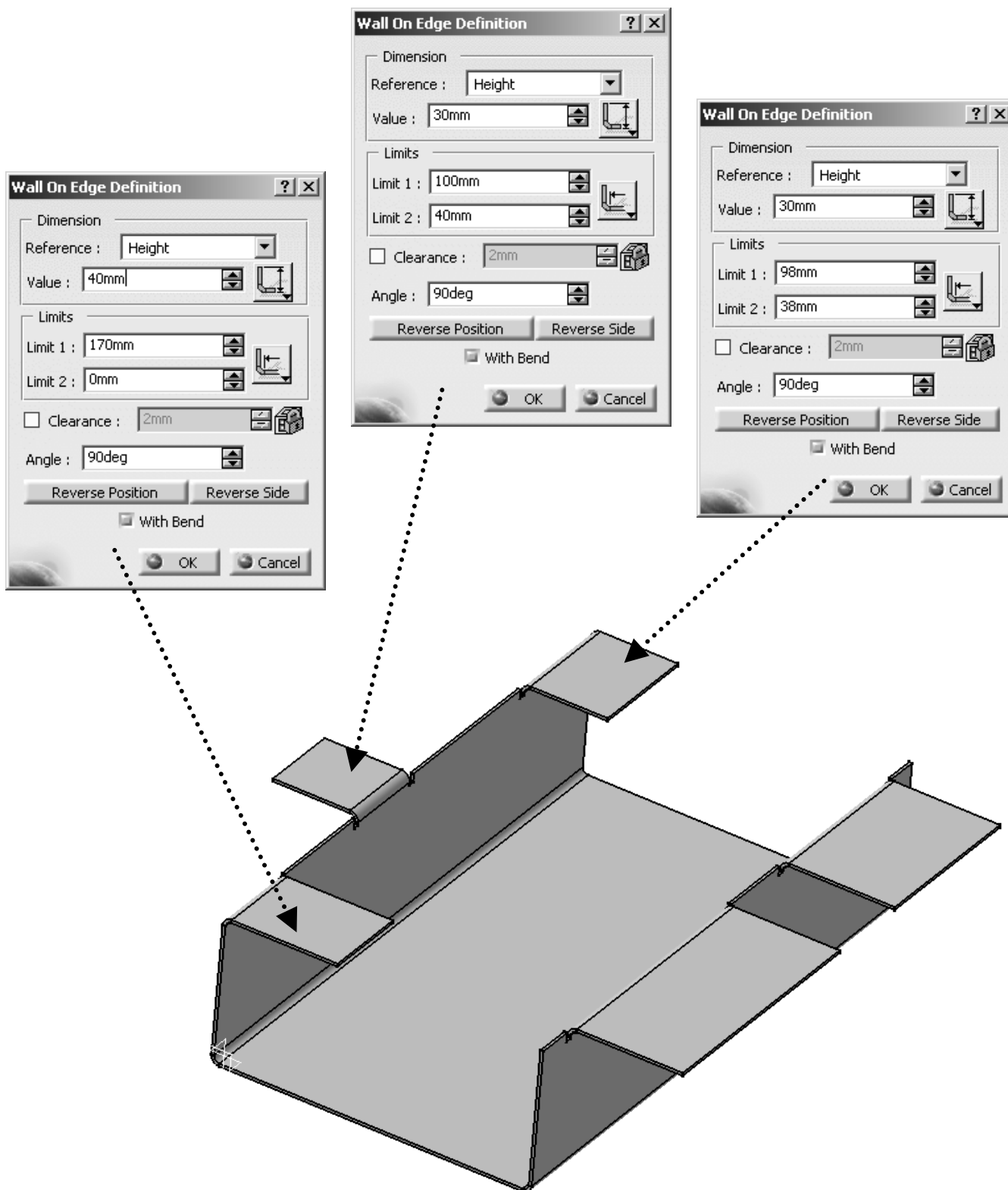
Sada ćemo napraviti savojne lukove na spojevima stranica. Koristimo funkciju **Bend** ili **Automatic Bends**. (Pri korištenju funkcije Bend potrebno je selektirati dvije stranice između kojih želimo luk)



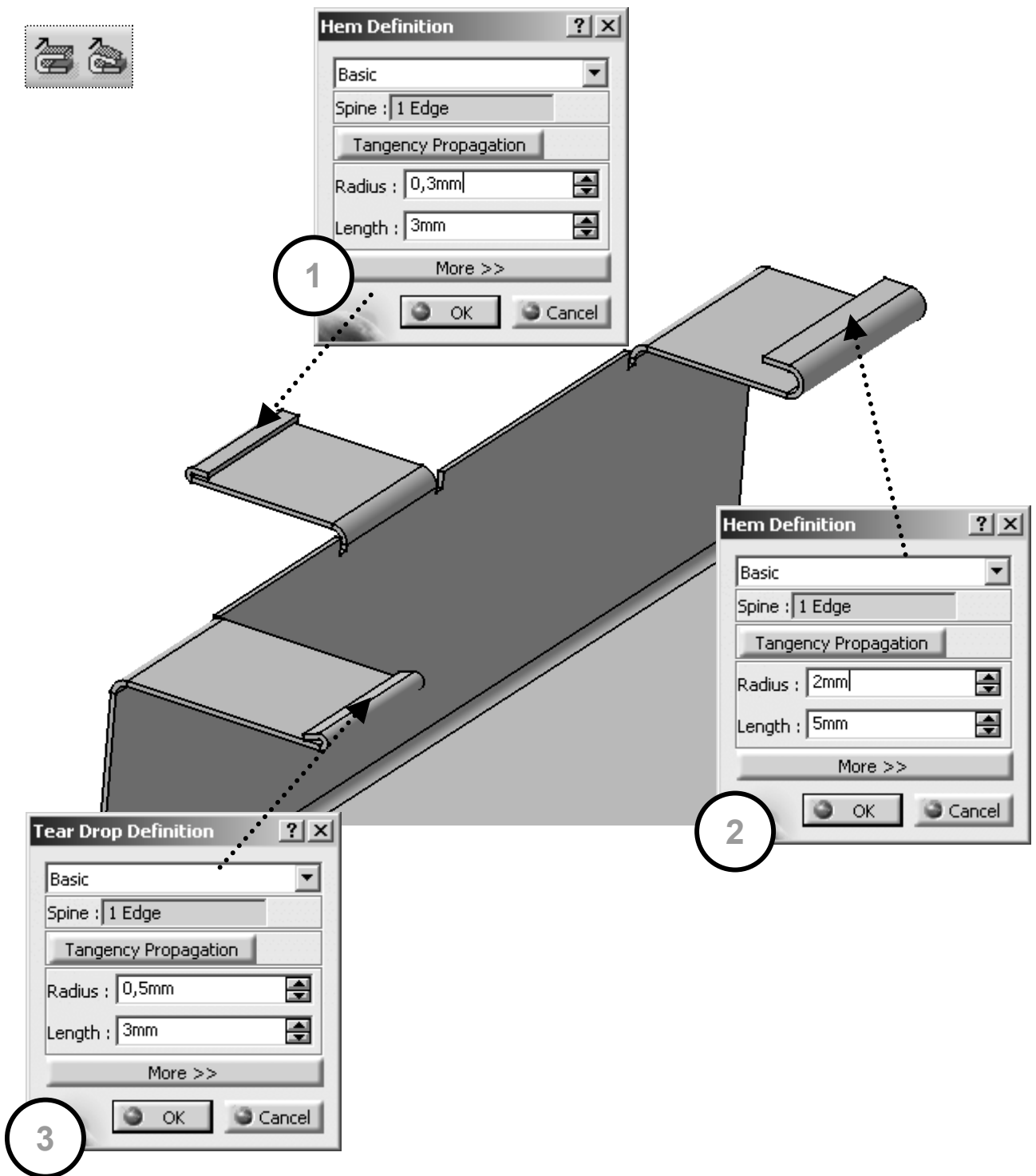
Na prikazanoj stranici radimo još jednu. Koristimo funkciju **Wall on Edge** prema slici i podacima.



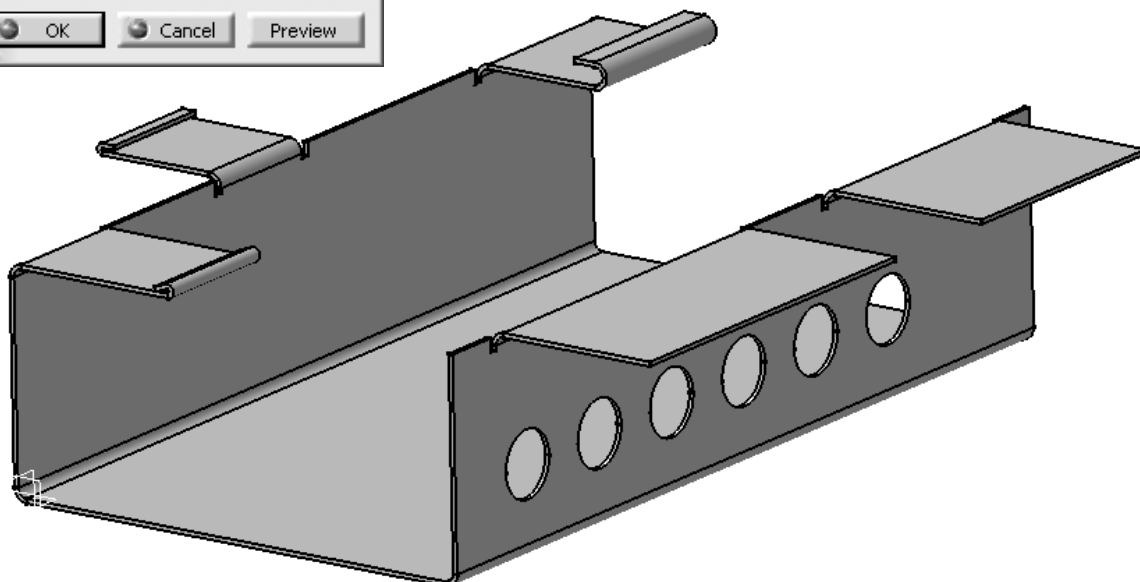
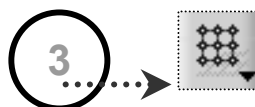
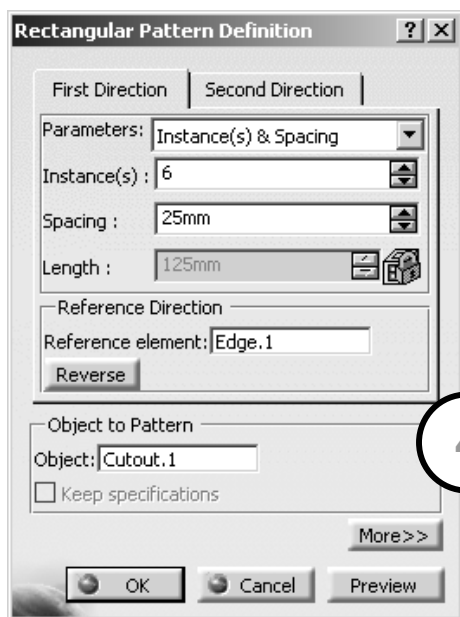
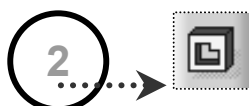
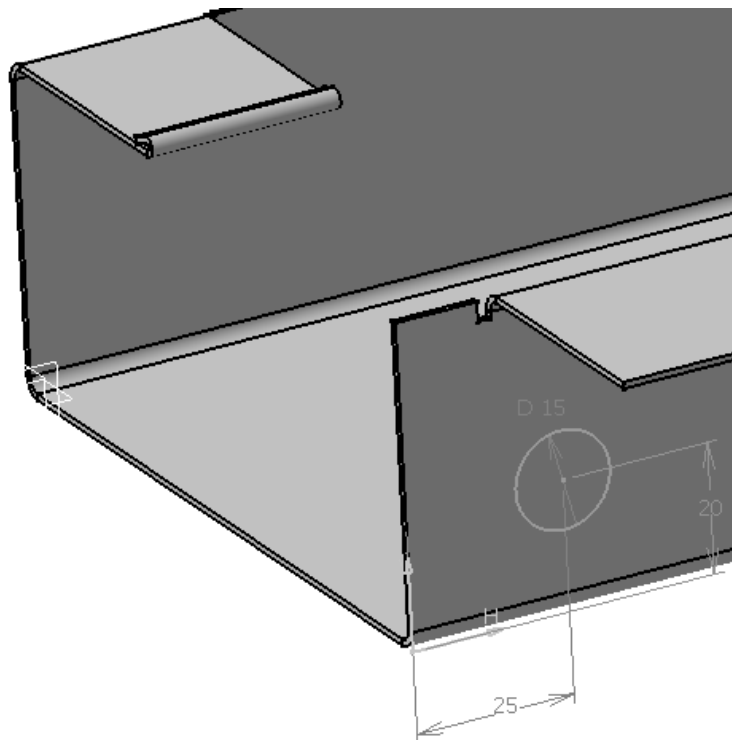
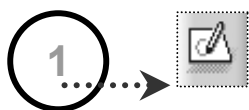
Na jednaki način nastavljamo i na drugoj stranici. Podaci su prikazani na slijedećoj slici.



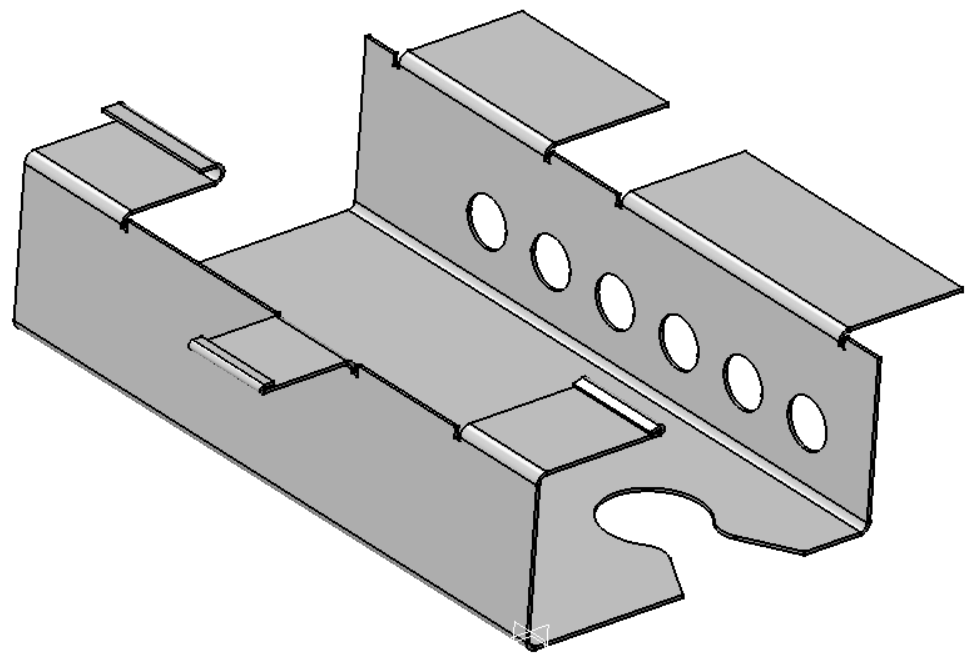
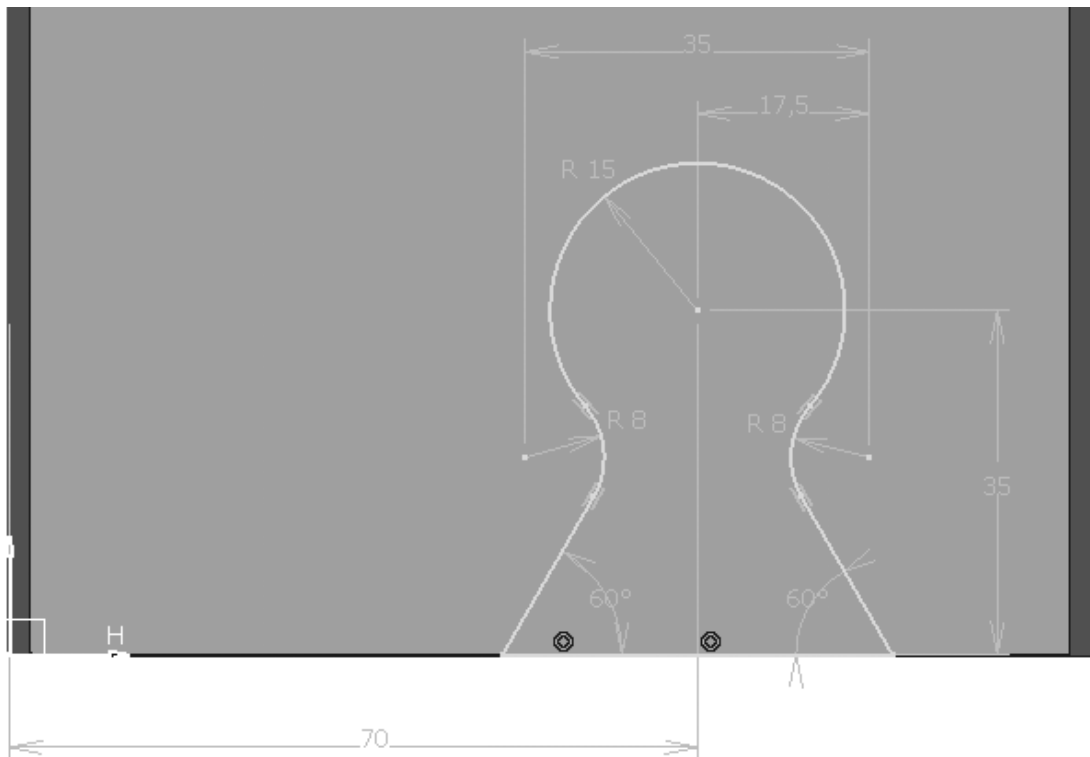
Na tako dobivenim stranicama savijamo krajeve prema slici. Koristimo funkcije **Tear Drop** i **Hem**.



Na bočnoj stranici treba napraviti izrez (Cutout) prema slici. Nakon toga ga umnožavamo funkcijom **Rectangular Pattern**.

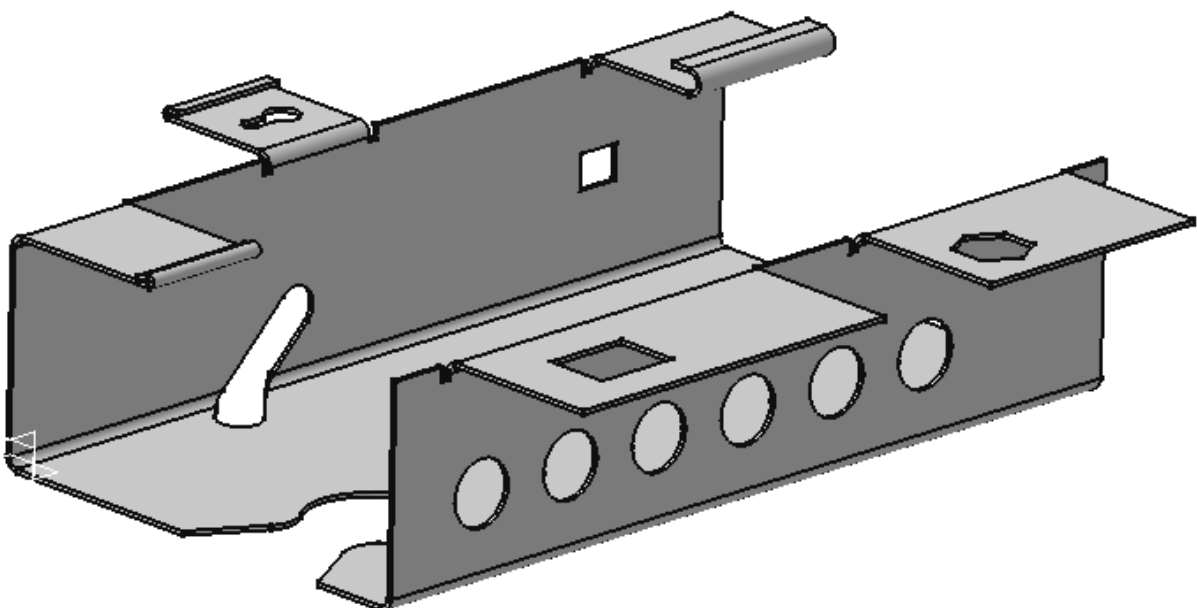
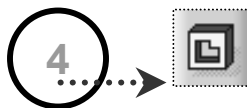
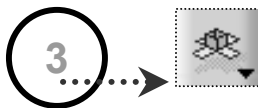
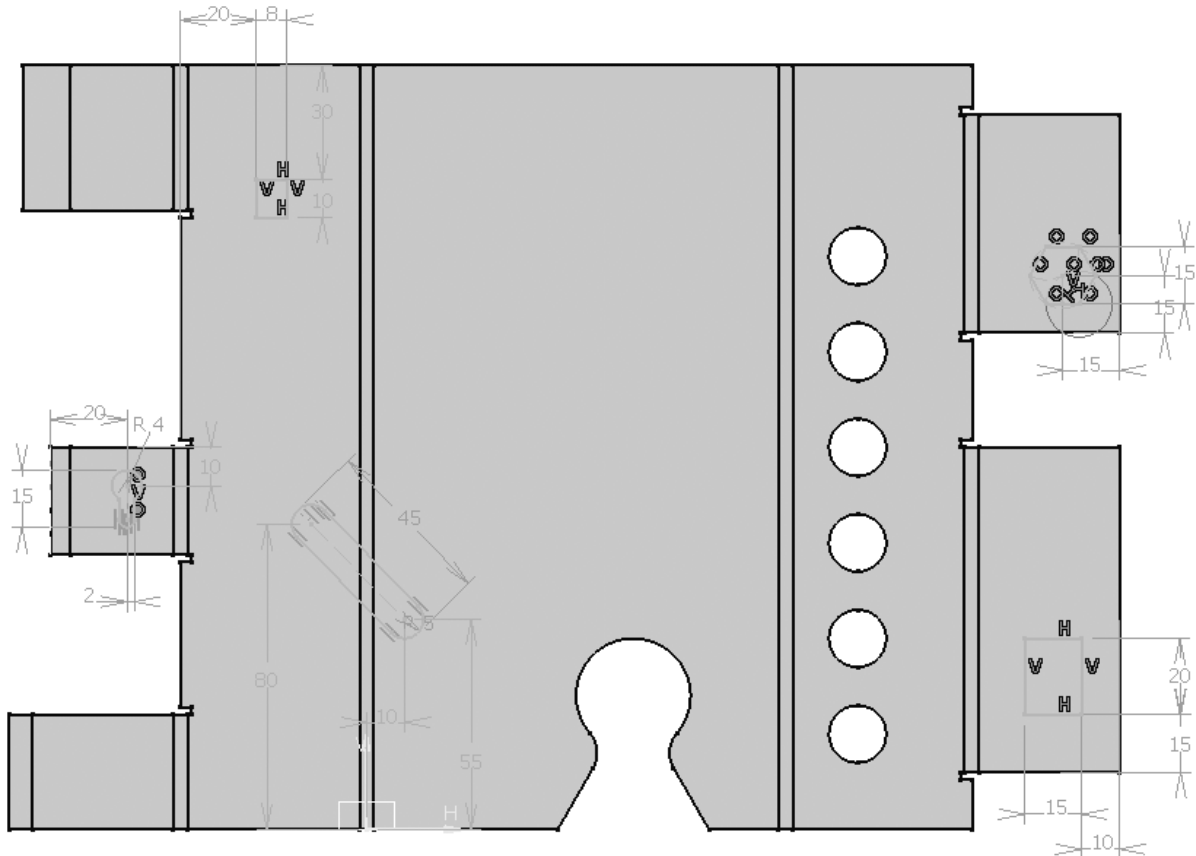
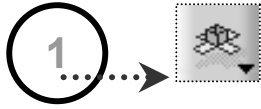


Slijedi izrada proreza (**Cutout**) na dnu kutije. Kontura je prikazana na slici.

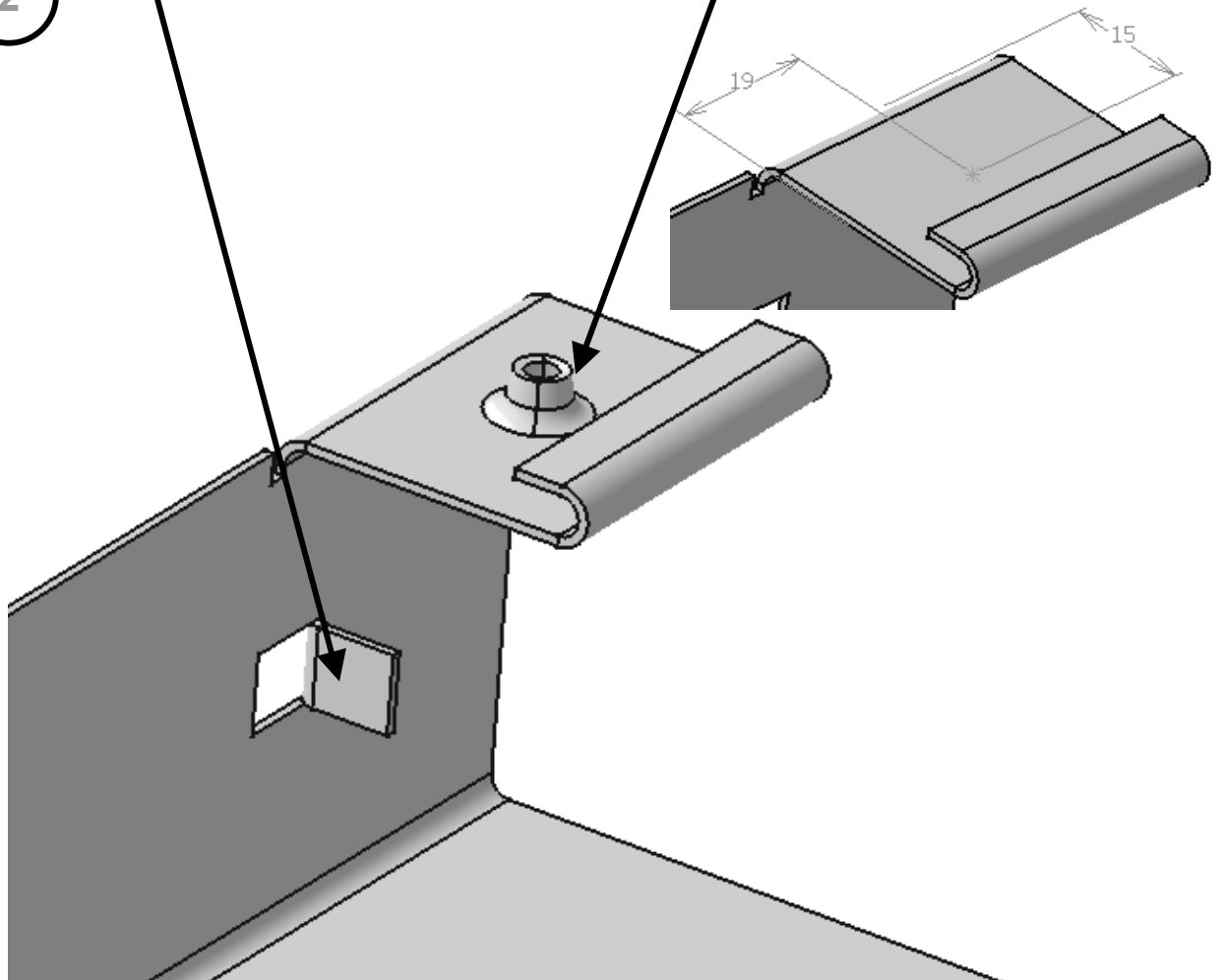
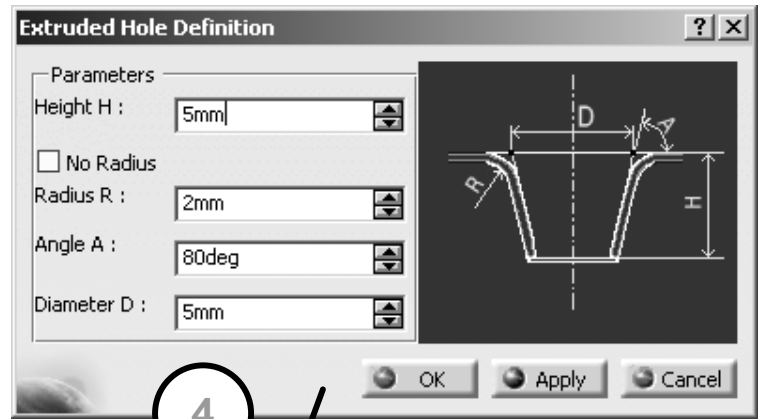
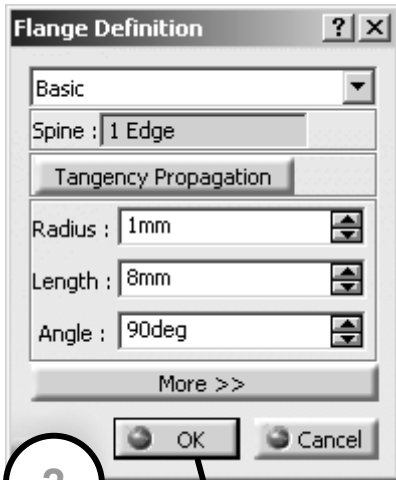
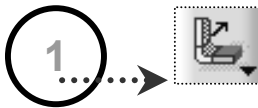


Sheet Metal Design

Prorezi se mogu modelirati i u razvijenom (Unfold) pogledu. Selektiramo funkciju **Unfold** i na gornjoj površini lima napravimo slijedeći sketch.



Slijedi izrada detalja sa slike. Koristimo funkcije **Flange** i **Extruded hole**.



Koristeći funkciju **Bridge** modeliramo "most" kako je pokazano na slikama.

1

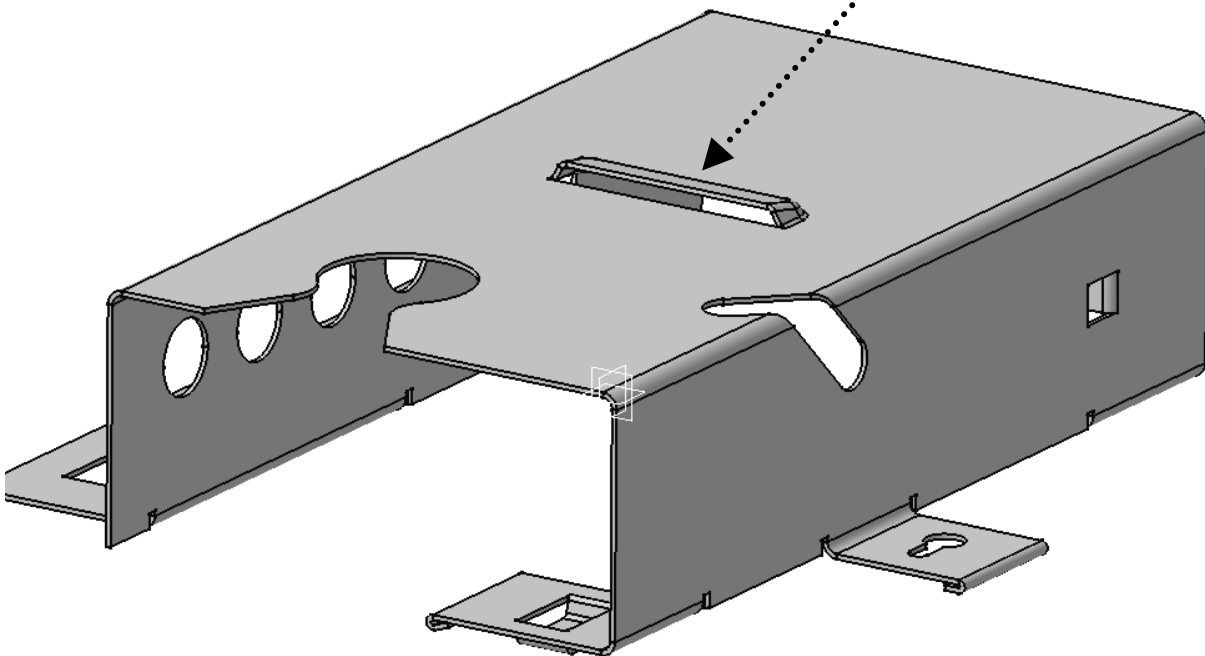
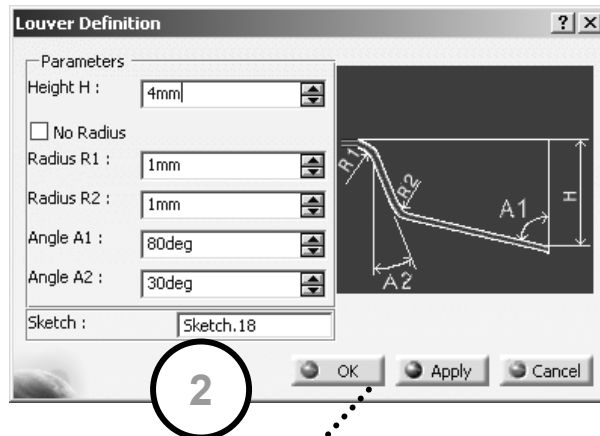
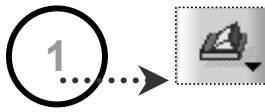
2

Bridge Definition	
Parameters	
Height H :	4mm
<input type="checkbox"/> No Radius	
Radius R1 :	1mm
Radius R2 :	1mm
Angle A :	80deg
Length L1 :	11mm
Length L2 :	17mm
Angular reference :	Edge
Orientation Angle :	0deg
OK Apply Cancel	

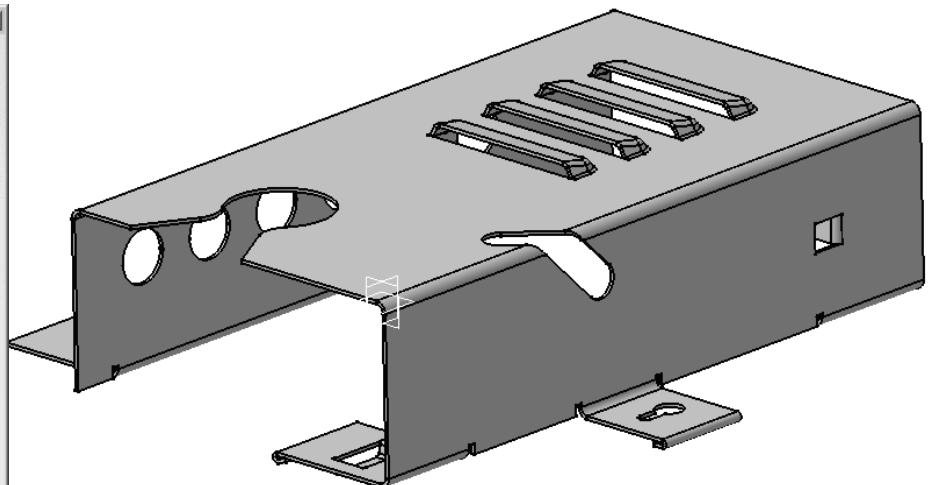
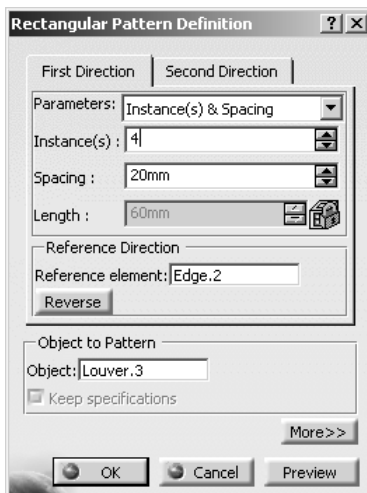
15

20

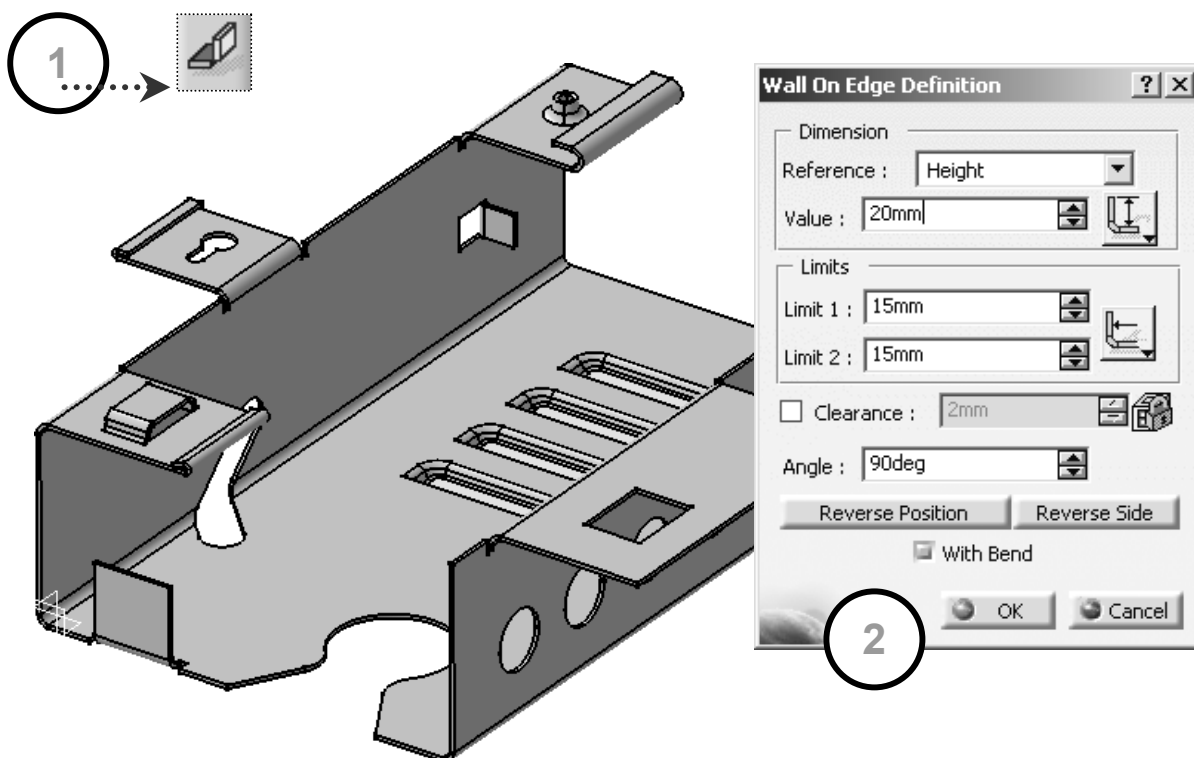
Otvor prema slici modeliramo funkcijom **Louver**. U sketchu napravimo konturu po kojoj se radi otvor. U prozoru definiramo ostale parametre.



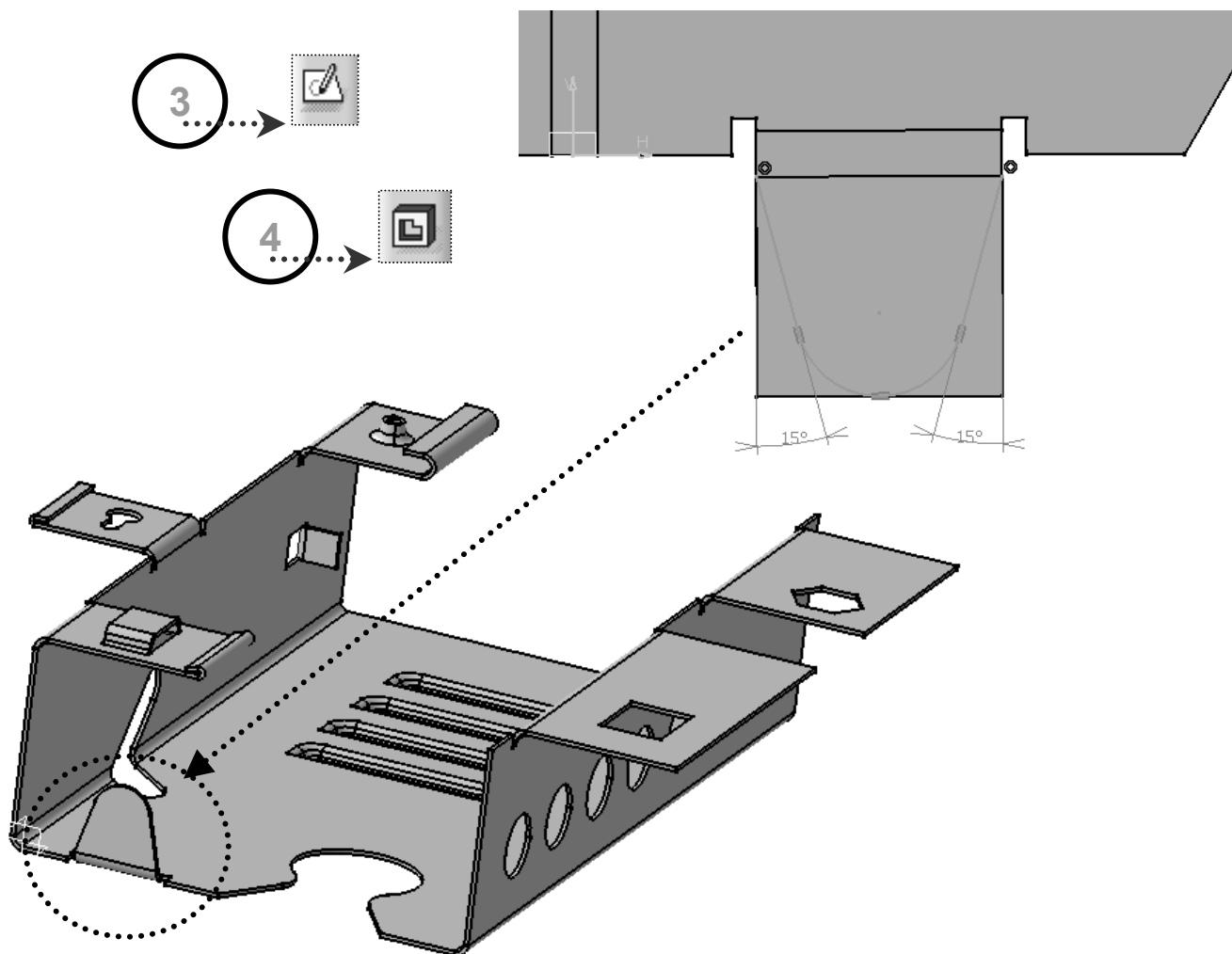
Postojeći prorez umnožavamo funkcijom **Rectangular Pattern**.



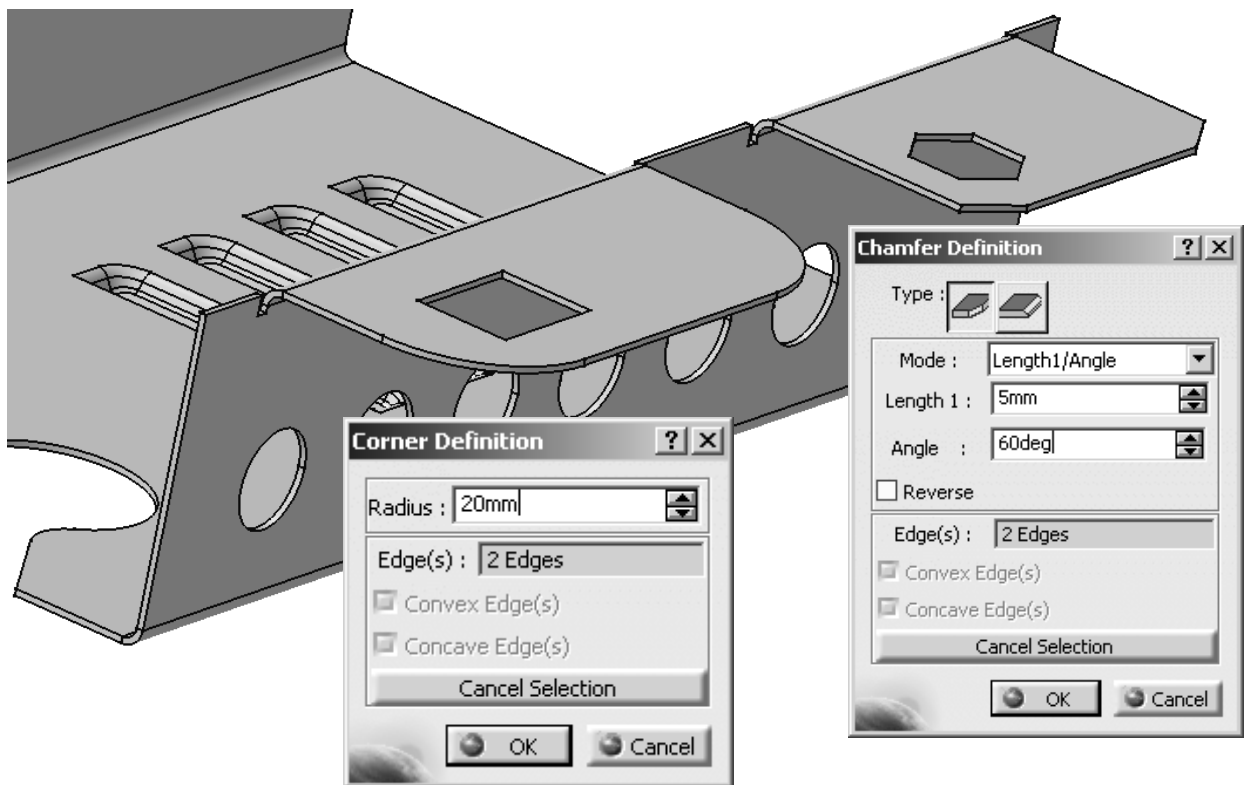
Preostaje izrada dijela stranice prema slici. Koristimo funkciju **Wall on Edge**.



Nakon toga napravimo **Cutout** prema slici u razvijenom pogledu.



Na kraju je potrebno zaobliti oštre rubove. Koristimo funkcije **Corner** i **Chamfer**. Dobivamo stanje prema slici.



Time smo završili s ovom vježbom. Gotovi model je prikazan na sljedećoj slici.

